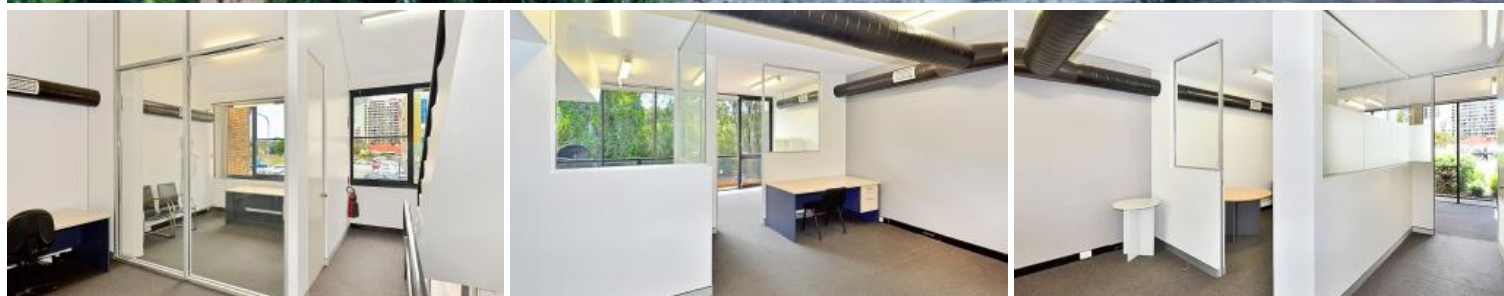


Leased



## TERRACE LOOKING ONTO PARRAMATTA RIVER

Located within 200m to Parramatta's Ferry wharf fronting Parramatta River.

Enjoy the scenic outlook in this well appointed commercial terrace.

Featuring;

- + Existing glass partitions throughout
- + Partially fitted
- + Modern kitchen and end of trip facilities (shower and change area)
- + Reception area
- + Boardroom
- + Good proportion of offices and open space
- + Balcony
- + 4 parking spaces

The above information provided has been furnished to us by the vendor/s. We have not verified whether or not that information is accurate and do not have any belief in one way or the other in its accuracy. We do not accept any responsibility to any person for its accuracy and do no more than pass it on. All interested parties should make and rely upon their own inquiries in order to determine whether or not this information is in fact accurate.

 4

**Price** Only \$350 / sqm + GST including parking!

**Property Type** Commercial

**Property ID** 453

**Building Area** Retail - 210 m<sup>2</sup>

### AGENT DETAILS

Peter Karam - 0414 905 639

### OFFICE DETAILS

Belroy Property  
Level 3 85 George St Parramatta NSW  
2124 Australia  
02 9895 4000

**belroy**