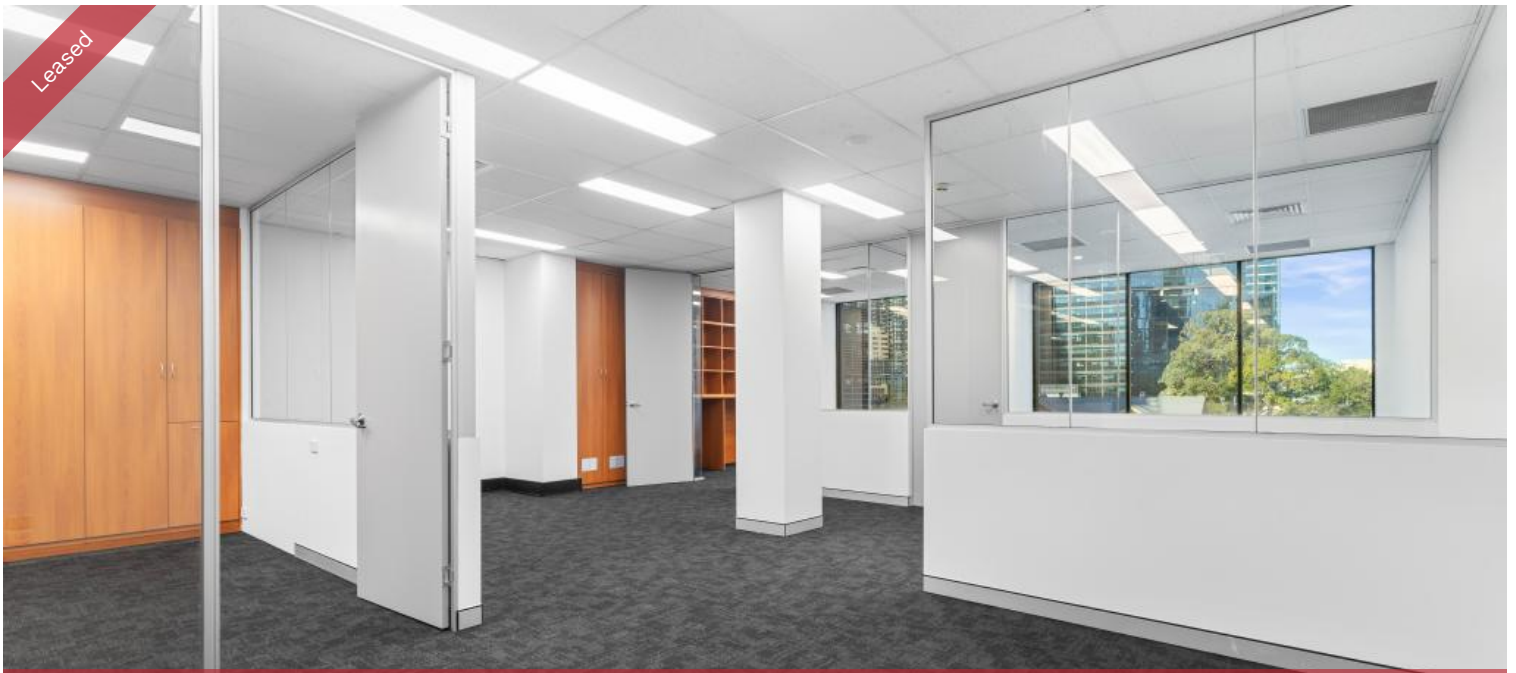


Leased



Level 4, Suite 2, 85 George Street, Parramatta



PREMIUM OFFICE 98SQM + PARKING + FITOUT

Office space 98sqm + Fitout for Lease in Parramatta's premium office building, within walking distance to Parramatta Square, Westfield and Ferry terminal

Features include

- + Glass Partitioned Offices
- + New Carpet
- + Spacious entry lobby
- + Courtyard
- + Three lifts accessing all eight levels
- + 24/7 Secure car basement levels plus visitor parking bays in front of the premises.
- + Available now

Contact Sam Agositno 0413901919 for an inspection

The above information provided has been furnished to us by the vendor/s. We have not verified whether or not that information is accurate and do not have any belief in one way or the other in its accuracy. We do not accept any responsibility to any person for its accuracy and do no more than pass it on. All interested parties should make and rely upon their own inquiries in order to determine whether or not this information is in fact accurate.

 1  98m2

Price	\$56,840 pa
Property Type	Commercial
Property ID	875
Land Area	98 m2
Office Area	98 m2

AGENT DETAILS

Sam Agostino - 0413 901 919

OFFICE DETAILS

Belroy Property
Level 3 85 George St Parramatta NSW
2124 Australia
02 9895 4000

belroy